

RP01274LQ

Leader in Biomolecular Solutions for Life Science



Recombinant SARS-CoV-2 papain-like protease Protein

Catalog No.: RP01274LQ **Recombinant**

Sequence Information

Species **Gene ID** **Swiss Prot**
SARS-CoV-2

Tags
N-His

Synonyms
PLPro;PL-PRO;pp1a;Papain-like
Protease;Replicase polyprotein 1a;ORF1a
polyprotein;Plpro;COVID-19

Product Information

Source **Purification**
<I>E. coli</I> > 90% by SDS-
PAGE.

Endotoxin
< 1.0 EU/μg of the protein by LAL
method.

Formulation
Supplied as a 0.22 μm filtered solution in
20mM Tris,20% Glycerol,10mM β-
Me□pH7.5.Contact us for customized
product form or formulation.

Reconstitution

Background

Basic Information

Description
Recombinant SARS-CoV-2(2019-nCoV) papain-like protease is produced by <I>E.
coli</I> expression system. The target protein is expressed with sequence (Glu1564-
Lys1878) of SARS-COV-2(2019-nCoV) papain-like protease (Accession
#YP_009725299.1) fused with an initial Met,a 6×His tag at the N-terminus.

Bio-Activity

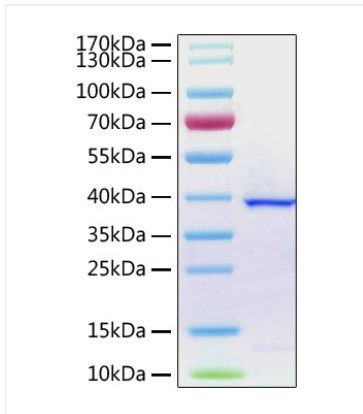
Storage
This product is stable at ≤ -70°C for up to 1 year from the date of receipt.
For
optimal storage, aliquot into smaller quantities after centrifugation and store at
recommended temperature.Avoid repeated freeze-thaw cycles.
Avoid repeated freeze/thaw cycles.

Contact



| www.abclonal.com

Validation Data



Recombinant SARS-CoV-2 papain-like protease Protein was determined by SDS-PAGE with Coomassie Blue, showing a band at 38 kDa.