



Atg4D rabbit pAb

NB-66-14591-50 μ L

Atg4D rabbit pAb

Cat No.:NB-66-14591-50µL

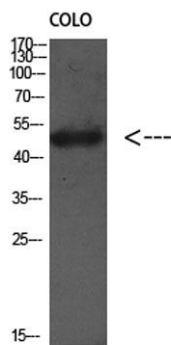
For research use only

Overview

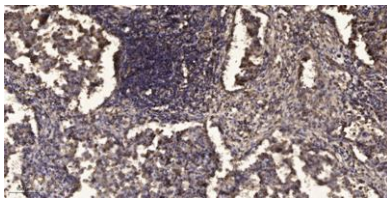
Product Name	Atg4D rabbit pAb
Host species	Rabbit
Applications	WB;IHC;IF;ELISA
Species Cross-Reactivity	Human;Rat;Mouse;
Recommended dilutions	Western Blot: 1/500 - 1/2000. Immunohistochemistry: 1/100 - 1/300. ELISA: 1/5000. Not yet tested in other applications.
Immunogen	Synthesized peptide derived from the Internal region of human Atg4D.
Specificity	Atg4D Polyclonal Antibody detects endogenous levels of Atg4D protein.
Formulation	Liquid in PBS containing 50% glycerol, 0.5% BSA and 0.02% sodium azide.
Storage	Store at -20°C. Avoid repeated freeze-thaw cycles.
Protein Name	Cysteine protease ATG4D
Gene Name	ATG4D
Cellular localization	[Cysteine protease ATG4D]: Cytoplasm .; [Cysteine protease ATG4D, mitochondrial]: Cytoplasm . Mitochondrion matrix . Imported into mitochondrial matrix after cleavage by CASP3 during oxidative stress and cell death. .
Purification	The antibody was affinity-purified from rabbit antiserum by affinity-chromatography using epitope-specific immunogen.
Clonality	Polyclonal
Concentration	1 mg/ml
Observed band	45kD
Human Gene ID	84971
Human Swiss-Prot Number	Q86TL0
Alternative Names	ATG4D; APG4D; AUTL4; Cysteine protease ATG4D; AUT-like 4 cysteine endopeptidase; Autophagin-4; Autophagy-related cysteine endopeptidase 4; Autophagy-related protein 4 homolog D

Background

Autophagy is the process by which endogenous proteins and damaged organelles are destroyed intracellularly. Autophagy is postulated to be essential for cell homeostasis and cell remodeling during differentiation, metamorphosis, non-apoptotic cell death, and aging. Reduced levels of autophagy have been described in some malignant tumors, and a role for autophagy in controlling the unregulated cell growth linked to cancer has been proposed. This gene belongs to the autophagy-related protein 4 (Atg4) family of C54 endopeptidases. Members of this family encode proteins that play a role in the biogenesis of autophagosomes, which sequester the cytosol and organelles for degradation by lysosomes. Alternative splicing results in multiple transcript variants. [provided by RefSeq, Jul 2013],



Western Blot analysis of Colo using Antibody diluted at 1:1000. Secondary antibody(catalog#:RS0002) was diluted at 1:20000



Immunohistochemical analysis of paraffin-embedded human Squamous cell carcinoma of lung. 1, Antibody was diluted at 1:200(4° overnight). 2, Tris-EDTA,pH9.0 was used for antigen retrieval. 3,Secondary antibody was diluted at 1:200(room temperature, 45min).