

## **Anti-IL6 antibody (Internal) (20-330)** **Cat# NB-22-6711 Size:100ug**

### **GENERAL INFORMATION**

<b>Product Type</b>	Primary antibodies
<b>Short Description</b>	Rabbit polyclonal antibody anti-Interleukin-6 (Internal) is suitable for use in Western Blot, Immunohistochemistry, Immunofluorescence and ELISA research applications.
<b>Applications</b>	WB, IHC-P, IF-P, ELISA
<b>Host/Source</b>	Rabbit
<b>Reactivity</b>	Human, Rat, Mouse

### **PRODUCT PROPERTIES**

<b>Clonality</b>	Polyclonal
<b>Clone ID</b>	
<b>Concentration</b>	1 mg/mL
<b>Conjugation</b>	Unconjugated
<b>Purification</b>	The antibody was affinity-purified from rabbit anti-serum by affinity-chromatography.
<b>Dilution Range</b>	WB 1:500-1:2000 IHC 1:100-1:300 ELISA 1:20000
<b>Formulation</b>	PBS, 50% Glycerol, 0.5% BSA and 0.02% Sodium Azide.
<b>Isotype</b>	IgG
<b>Storage Instruction</b>	Store at -20°C for up to 1 year from the date of receipt, and avoid repeat freeze-thaw cycles.

### **TARGET INFORMATION**

<b>Gene ID</b>	3569
<b>Gene Symbol</b>	IL6
<b>Uniprot ID</b>	IL6_HUMAN
<b>Immunogen</b>	The antiserum was produced against synthesized peptide derived from the Internal region of human IL6 at amino acid range 131- 180
<b>Immunogen Region</b>	Internal
<b>Specificity</b>	IL6 polyclonal antibody (Interleukin-6) binds to endogenous Interleukin-6 at the amino acid region Internal.
<b>Immunogen Sequence</b>	

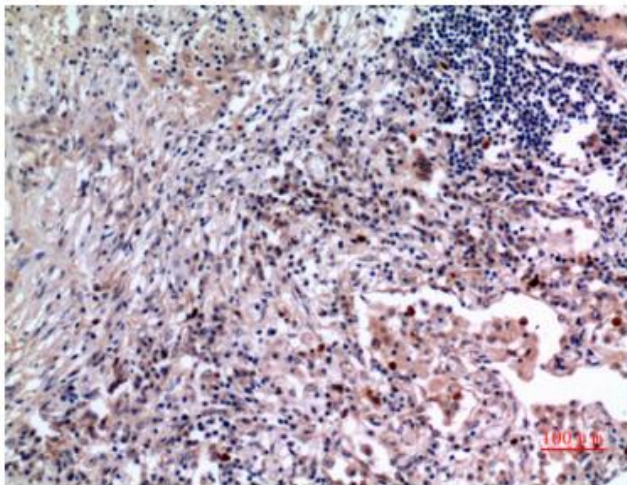
This product is suitable for in-vitro studies under the RESEARCH USE ONLY [RUO] licence. This product must not be used as for diagnostic or other medical purposes.



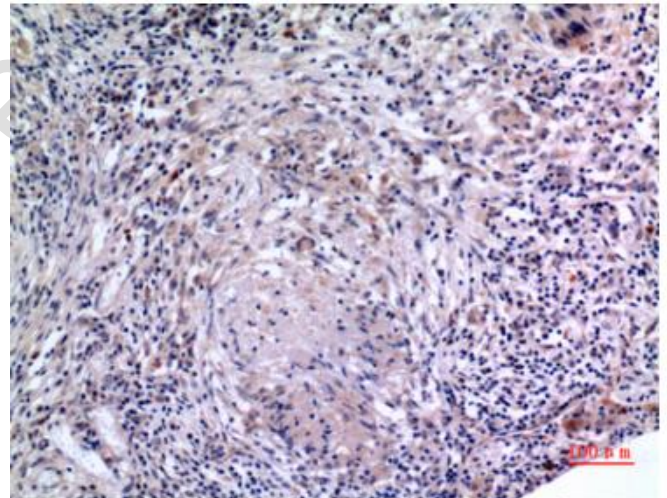
Western blot analysis of lysate from K562 cells, using IL6 Antibody.



Western blot analysis of K562 cells using IL-6 Polyclonal Antibody. Antibody was diluted at 1:1000. Secondary antibody was diluted



Immunohistochemistry of paraffin-embedded human-lung, antibody was diluted at 1:100



Immunohistochemistry of paraffin-embedded human-lung, antibody was diluted at 1:100

This product is suitable for in-vitro studies under the RESEARCH USE ONLY [RUO] licence. This product must not be used as for diagnostic or other medical purposes.