

Anti-Phospho-PERK (T981) antibody

Cat# NB-22-1215-200UL

General Information

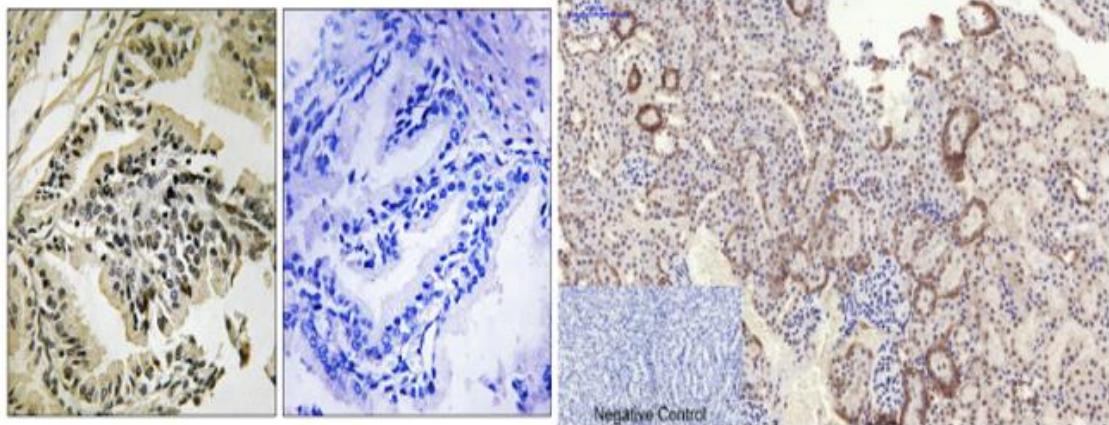
Product Type	Primary antibodies
Short Description	Rabbit polyclonal anti-Phospho-PERK (T981) antibody is suitable for use in Immunofluorescence, Western Blot, Immunohistochemistry and ELISA
Background	
Applications	IF, WB, IHC-P, ELISA
Host/Source	Rabbit
Reactivity	Human, Mouse, Rat

Product Properties

Clonality	Polyclonal
Clone ID	
Concentration	1 mg/mL
Conjugaison	Unconjugated
Purification	The antibody was affinity-purified from rabbit antiserum by affinity-chromatography using a epitope-specific immunogen
Dilution Range	IF 1:50-200 WB 1:500-2000 IHC 1:100-1:300 ELISA 1:40000
Formulation	Liquid in PBS containing 50% glycerol, 0.5% BSA and 0.02% sodium azide.
Isotype	IgG
Storage Instruction	Store at -20°C, and avoid repeat freeze-thaw cycles

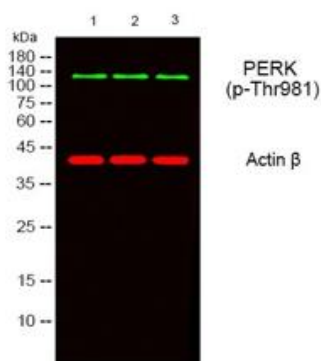
Target information

Gene ID	9451
Gene Symbol	EIF2AK3
Uniprot ID	E2AK3_HUMAN
Immunogen	Synthesized peptide derived from human PERK around the phosphorylation site of T981
Immunogen Region	920-1000 aa
Specificity	Phospho-PERK (T981) polyclonal antibody detects endogenous levels of PERK protein only when phosphorylated at T981
Immunogen Sequence	

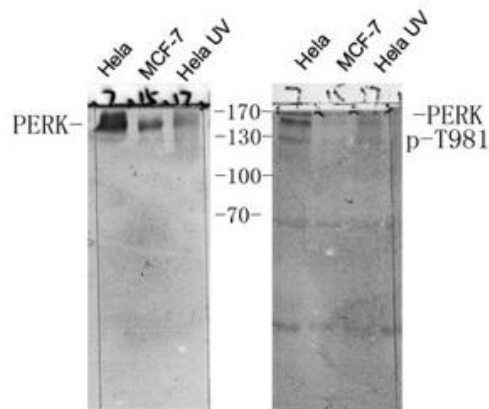


Immunohistochemistry analysis of paraffin-embedded human prostate carcinoma, using PEK/PERK (Phospho-Thr981) Antibody. The picture on the right is blocked with the phospho peptide.

Immunohistochemical analysis of paraffin-embedded Mouse-kidney tissue. 1. PERK (phospho Thr981) Polyclonal Antibody was diluted at 1:200 (4°C, overnight). 2. Sodium citrate pH 6.0 was used for antibody retrieval (>98°C, 20min). 3. Secondary antibody was diluted at 1:200 (room temperature, 30min). Negative control was used by secondary antibody only.



Western blot analysis of lysates from 1) 453, 2) AD293, 3) HeLa cells, (Green) primary antibody was diluted at 1:1000, 4°C overnight, secondary antibody (cat: (NA) was diluted at 1:10000, 37°C 1hour. (Red) Actin Beta monoclonal antibody (5B7) (cat: (STJ96930) antibody was diluted at 1:5000 as loading control, 4°C overnight, secondary antibody (cat: (NA) was diluted at 1:10000, 37°C 1hour.



Western blot analysis of various cells using antibody diluted at 1:1000. Secondary antibody was diluted at 1:20000

For reference only

For Research Use Only. Not for Diagnostic or Therapeutic Use.