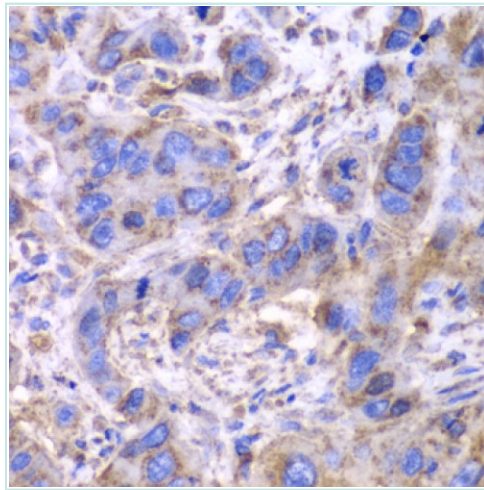
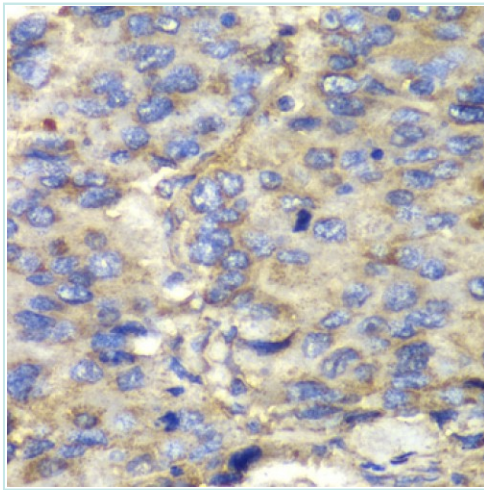
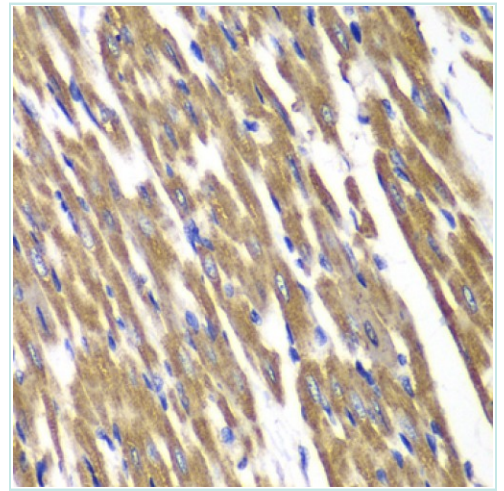
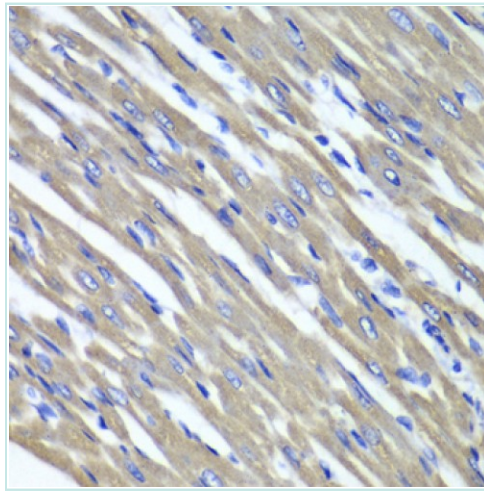
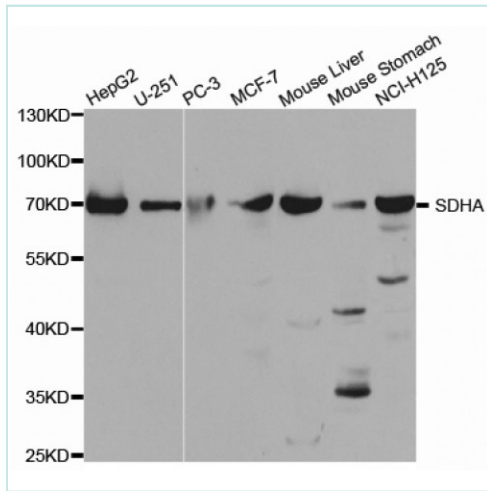


SDHA antibody



Product Description

This gene encodes a major catalytic subunit of succinate-ubiquinone oxidoreductase, a complex of the mitochondrial respiratory chain. The complex is composed of four nuclear-encoded subunits and is localized in the mitochondrial inner membrane. Mutations in this gene have been associated with a form of mitochondrial respiratory chain deficiency known as Leigh Syndrome. A pseudogene has been identified on chromosome 3q29.

Product Information

Code:	NB-22-0310
Clonality	Polyclonal
Host	Rabbit
Reactivity	Human, Mouse, Rat
Applications	WB, IHC
Immunogen	Recombinant protein of human SDHA
Conjugation	Unconjugated
Gene ID	6389
Isotype	IgG
Dilution range	WB 1:500-1:2000; IHC 1:50-1:200
Swiss-Prot Key	P31040

Purification	Affinity purification
Form	PBS with 0.02% sodium azide, 50% glycerol, pH7.4
Molecular Weight	N/A
Concentration	1 mg/ml
Storage	Store at -20°C. Avoid repeated freeze/thaw cycles.
Alternative names	FP; PGL5; SDH1; SDH2; SDHF; CMD1GG;
Note	For research use only.
