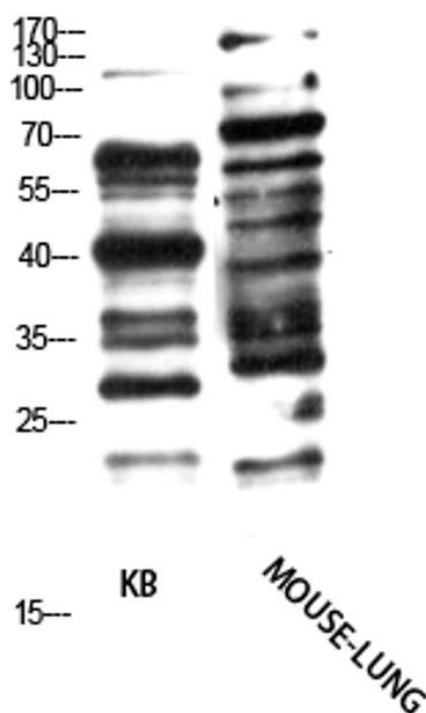


## Anti-Pan-Glycine myristoylation antibody

Cat # NB-22-7896-50 size: 50µg

Cat # NB-22-7896-100 size: 100µg

Cat # NB-22-7896-200ul size: 200µl



Western blot analysis of KB, MOUSE-LUNG cells using Antibody diluted at 1000.  
Secondary antibody was diluted at 1:20000

### Description

Rabbit polyclonal antibody anti-Pan-Pan myristoylation is suitable for use in Western Blot and ELISA research applications.

### Product Information

<b>Host:</b>	Rabbit
<b>Applications:</b>	WB, ELISA
<b>Reactivity:</b>	all species
<b>Clonality:</b>	Polyclonal
<b>Conjugation:</b>	Unconjugated
<b>Isotype:</b>	IgG
<b>Formulation:</b>	PBS, 50% Glycerol, 0.5% BSA and 0.02% Sodium Azide.
<b>Purification:</b>	affinity-purified from rabbit anti-serum by affinity-chromatography.

---

**Concentration:** 1 mg/mL  
**Dilution Range:** WB 1:500-2000  
ELISA 1:10000-20000  
**Storage Instruction:** Store at -20°C for up to 1 year from the date of receipt, and avoid repeat freeze-thaw cycles.

## Target

---

**Specificity:** Pan-Glycine myristoylation polyclonal antibody (Pan myristoylation) binds to endogenous Pan myristoylation  
**Immunogen:** Synthetic myristoylated peptide

For reference only

***For reference only  
For Research Use Only. Not for Diagnostic or Therapeutic Use.***