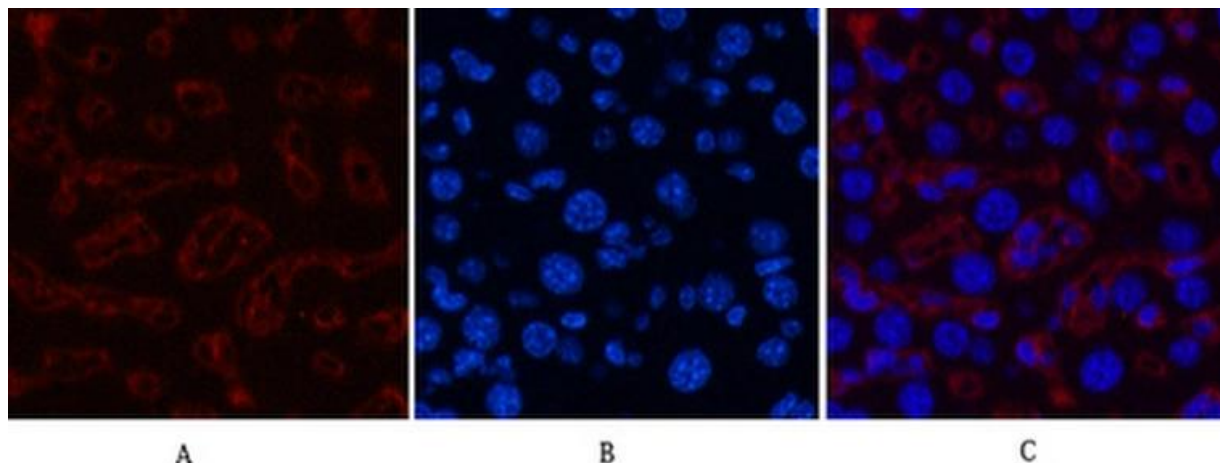


## Anti-COL3A1 antibody [Q76]

Cat # NB-22-7023-50 size: 50µg

Cat # NB-22-7023 size: 100µg



Immunofluorescence analysis of Mouse-liver tissue. 1, Collagen III monoclonal antibody (Q76) (red) was diluted at 1:200 (4°C, overnight). 2, Cy3 labeled Secondary antibody was diluted at 1:300 (room temperature, 50min). 3, Picture B: DAPI (blue) 10min. Picture A: Target. Picture B: DAPI. Picture C: merge of A+B

### Description

Mouse monoclonal antibody anti-Collagen Alpha-1 (Iii Chain is suitable for use in Western Blot, Immunohistochemistry, Immunofluorescence and Immunocytochemistry research applications.

### Product Information

<b>Host:</b>	Mouse
<b>Applications:</b>	WB, IHC-P, IF, ICC
<b>Reactivity:</b>	Human, Mouse, Rat
<b>Clonality:</b>	Monoclonal
<b>Clone ID:</b>	Q76
<b>Conjugation:</b>	Unconjugated
<b>Isotype:</b>	IgG1
<b>Formulation:</b>	PBS, pH 7.4, 0.5% BSA, 0.02% Sodium Azide and 50% Glycerol.
<b>Purification:</b>	The antibody was isolated from ascitic fluid by immunoaffinity chromatography using antigens coupled to agarose beads.
<b>Dilution Range:</b>	WB 1:1000 IF 1:200 IHC 1:50-300
<b>Storage Instruction:</b>	Store at -20°C for up to 1 year from the date of receipt, and avoid repeat freeze-thaw cycles.

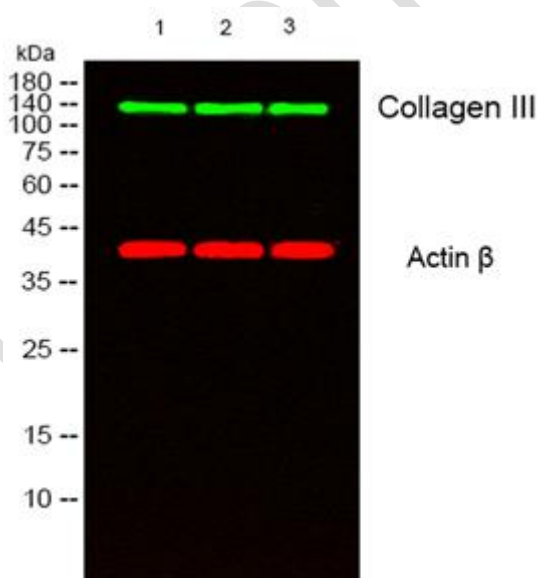
## Target

<b>Gene symbol:</b>	COL3A1
<b>Gene ID:</b>	1281
<b>Uniprot ID:</b>	CO3A1_HUMAN
<b>Protein Name:</b>	Collagen Alpha-1 (III Chain)
<b>Specificity:</b>	COL3A1 monoclonal antibody (Collagen Alpha-1 (III Chain) binds to endogenous Collagen Alpha-1 (Iii Chain).
<b>Immunogen:</b>	Synthetic peptide of Collagen III

## Additional information

**Function:** Collagen type III occurs in most soft connective tissues along with type I collagen. Involved in regulation of cortical development. Is the major ligand of ADGRG1 in the developing brain and binding to ADGRG1 inhibits neuronal migration and activates the RhoA pathway by coupling ADGRG1 to GNA13 and possibly GNA12.

**Cellular Localisation:** Secreted  
Extracellular Space  
Extracellular Matrix



Western blot analysis of lysates from 1) MCF7, 2) HeLa, 3) 293T cells, (Green) primary antibody was diluted at 1:1000, 4°C over night, secondary antibody (cat: (NA) was diluted at 1:10000, 37°C 1hour. (Red) Actin Beta Polyclonal Antibody) antibody was diluted at 1:5000 as loading control, 4°C over night, secondary antibody ) was diluted at 1:10000, 37°C 1hour.

**For reference only**  
**For Research Use Only. Not for Diagnostic or Therapeutic Use.**