

Cytokeratin H.M.W.; Clone 34βE12 (Ready-To-Use)

Catalog Number	Volume
A00071-0002	2 ml
A00071-0007	7 ml
A00071-0025	25 ml
A00071-C.1	0.1 ml
A00071-C	1 ml

Description

Species: Mouse
Immunogen: Solubilized keratin extract from human stratum corneum.
Clone: 34βE12
Isotype: IgG1, kappa
Format: Ready-to-Use antibody has been pretitered and quality controlled to work on formalin-fixed paraffin-embedded as well as acetone fixed cryostat tissue sections. No further titration is required. Concentrate antibody is provided at 200µg/ml of Ab purified from Bioreactor Concentrate by Protein A/G. Prepared in 10mM PBS with 0.05% BSA & 0.05% azide.

Specificity: This antibody recognizes CK1, CK5, CK10, and CK14. In normal epithelia, it stains stratified epithelia, myoepithelial cells, and basal cells in the prostate gland and bronchi. This antibody shows no reactivity with hepatocytes, pancreatic acinar cells, proximal renal tubules, or endometrial glands; there is no reactivity with cells derived from simple epithelia. Mesenchymal tumors, lymphomas, melanomas, neural tumors, and neuroendocrine tumors are negative with this antibody.

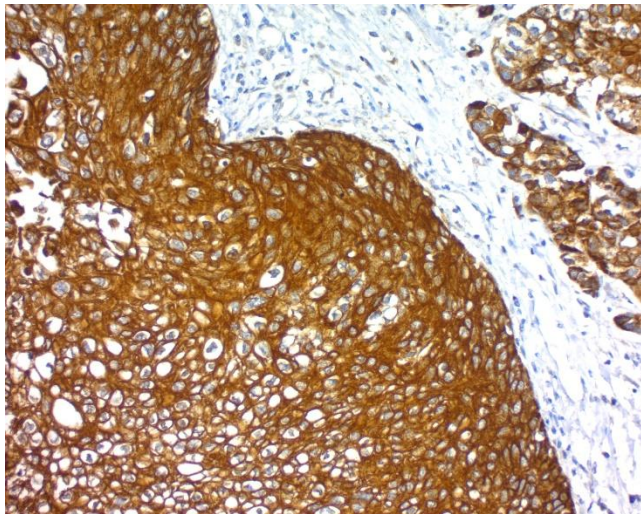
Species Reactivity: Human, Mouse, and Rat. Others not known.

Positive Control: PC12 cells, skin, prostate carcinoma.

Cellular Localization: Cytoplasmic

Titer/Working Dilution: Ready-to-Use: No further dilution required
 Concentrate: Suggested dilution is 1:100-200

Microbiological State: Nonsterile.



Human Lung Squamous Cell Carcinoma stained using Cytokeratin, H.M.W.; Clone 34bE12. Pretreatment with Citrate Plus (10x) HIER Solution, pH 6.5 (ScyTek# CPL500) for 5 minutes, PolyTek Anti-Mouse Polymerized HRP and DAB Chromogen/Substrate (High Contrast). Counterstained with Hematoxylin, Mayer's (Lillie's Modification). Final magnification 200X.

Intended Use

For In Vitro Diagnostic use. This antibody is intended for the qualitative visualization of the anatomical elements listed in the Specificity section. It is intended to be used within an Immunohistochemistry (IHC) procedure on formalin-fixed paraffin-embedded (FFPE) human tissue followed by visualization by light microscopy. Any diagnostic interpretation of the results of this antibody is to be complemented by morphological studies using proper controls and should be evaluated within the context of the patient's clinical history and other diagnostic tests by a qualified pathologist.

Procedure

- Tissue Section Pretreatment (Required):** Staining of formalin fixed, paraffin embedded tissue sections is enhanced by pretreatment with Citrate Plus (ScyTek catalog# CPL500).
- Primary Antibody Incubation Time:** We suggest an incubation period of 30 minutes at room temperature. However, depending upon the fixation conditions and the staining system employed, optimal incubation should be determined by the user.
- Visualization:** For maximum staining intensity we recommend the "CRF Anti-Polyvalent HRP Polymer" (ScyTek catalog# ABZ125, see IFU for instructions) combined with the "DAB Chromogen/Substrate Bulk Pack (High Contrast)" (ScyTek catalog# ACV500, see IFU for instructions).

Materials and Reagents Required but not Provided

- Control tissue and reagents
- Xylene, graded alcohols, and deionized/distilled water
- IHC detection system. Suggested: ScyTek Cat# ABZ125 "CRF Anti-Polyvalent HRP Polymer" and ScyTek Cat# ACV500 "DAB Chromogen/Substrate Kit (High Contrast)".
- Wash buffer for rinses (ScyTek Cat# TBT500)
- Retrieval solution (ScyTek Cat# CPL500)
- Hematoxylin counterstain and bluing reagent (ScyTek Cat# HMM500 and BRT500)
- Mounting medium and coverslips

Note: ScyTek Laboratories has a wide range of IHC reagents and ancillaries that can be found at scytex.com.

Storage and Stability

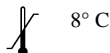
Do not Freeze. Store at 2-8°C. Return to 2-8° immediately after use. Do not use after expiration date printed on label. Verify visually that antibody has not been contaminated before use. Do not use if reagent becomes cloudy or precipitates.


Limitations

Immunohistochemistry is a complex technique involving both histological and immunological detection methods. Tissue processing and handling prior to immunostaining can cause inconsistent results. Variations in fixation and embedding or the inherent nature of the tissue specimen may cause variations in results. Endogenous peroxidase activity or pseudoperoxidase activity in erythrocytes and endogenous biotin may cause non-specific staining depending on detection system used. This data sheet's recommendations and procedures were validated using ScyTek IHC reagents and may not be suitable for other detection systems.

Precautions

Storage: 2° C



 ScyTek Laboratories, Inc.
 205 South 600 West
 Logan, UT 84321
 U.S.A.



EC REP

Emergo Europe
 Prinsessegracht 20
 2514 AP The Hague, The Netherlands

P.O. Box 3286 - Logan, Utah 84323, U.S.A. - Tel. (800) 729-8350 – Tel. (435) 755-9848 - Fax (435) 755-0015 - www.ScyTek.com

1. Contains Sodium Azide as a preservative (0.09% w/v), do not ingest. Sodium Azide may react with lead and copper plumbing to form highly explosive metal azides. Upon disposal, flush with large volumes of water to prevent azide build-up in plumbing. This product contains no hazardous material at a reportable concentration according to U.S. 29 CFR 1910.1200, OSHA Hazardous Communication Standard and EC Directive 91/155/EC.
2. Do not pipette by mouth.
3. Avoid contact of reagents and specimens with skin and mucous membranes.
4. Avoid microbial contamination of reagents or increased nonspecific staining may occur.
5. The user must validate any procedures and recommendations that differ from this data sheet.
6. The SDS may be found at scytek.com

References

1. Mathes RL, Dietrich UM, Krunkosky TM, Hurley DJ, Reber AJ. Establishing a reproducible method for the culture of primary equine corneal cells. *Veterinary ophthalmology*. 2009 Nov;12:41-9.
2. Moifar F et. al. *Am J Surg Pathol* 1999;23(9):1048-58
3. Varma M et. al. *Mod Pathol* 1999;12(5):472-8.

Warranty

No products or "Instructions For Use (IFU)" are to be construed as a recommendation for use in violation of any patents. We make no representations, warranties or assurances as to the accuracy or completeness of information provided on our IFU or website. Our warranty is limited to the actual price paid for the product. ScyTek Laboratories, Inc. is not liable for any property damage, personal injury, time or effort or economic loss caused by our products.

Storage: 2° C



8° C



ScyTek Laboratories, Inc.
205 South 600 West
Logan, UT 84321
U.S.A.



Emergo Europe
Prinsessegracht 20
2514 AP The Hague, The Netherlands