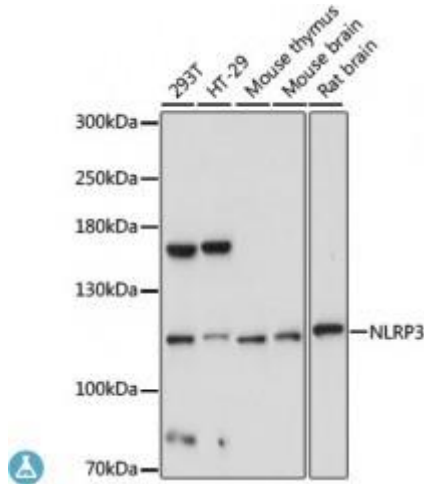


Anti-NA Antibody

Cat #NB-22-22183 (100µl)



Description

This gene encodes a pyrin-like protein containing a pyrin domain, a nucleotide-binding site (NBS) domain, and a leucine-rich repeat (LRR) motif. This protein interacts with the apoptosis-associated speck-like protein PYCARD/ASC, which contains a caspase recruitment domain, and is a member of the NALP3 inflammasome complex. This complex functions as an upstream activator of NF-kappaB signaling, and it plays a role in the regulation of inflammation, the immune response, and apoptosis. Mutations in this gene are associated with familial cold autoinflammatory syndrome (FCAS), Muckle-Wells syndrome (MWS), chronic infantile neurological cutaneous and articular (CINCA) syndrome, and neonatal-onset multisystem inflammatory disease (NOMID). Multiple alternatively spliced transcript variants encoding distinct isoforms have been identified for this gene. Alternative 5' UTR structures are suggested by available data; however, insufficient evidence is available to determine if all of the represented 5' UTR splice patterns are biologically valid.

Product informations

Model	NB-22-22183
Host	Rabbit
Reactivity	Human, Mouse, Rat
Applications	WB
Immunogen	Recombinant protein of human NLRP3
Gene ID	114548
Gene Symbol	NLRP3
Dilution range	WB 1:500 - 1:2000

Tissue Specificity	Predominantly expressed in macrophages, Also expressed in dendritic cells, B- and T-cells (at protein level)
Purification	Affinity purification
Note	For Research Use Only (RUO).
Protein Name	NACHT LRR and PYD domains-containing protein 3 Angiotensin/vasopressin receptor AII/AVP-like Caterpillar protein 1.1 CLR1.1 Cold-induced autoinflammatory syndrome 1 protein Cryopyrin PYRIN-containing APAF1-like pr
Molecular Weight	118.173 kDa
Clonality	Polyclonal
Conjugation	Unconjugated
Isotype	IgG
Formulation	PBS with 0.02% sodium azide, 50% glycerol, pH7.3.
Storage Instruction	Store at -20C. Avoid freeze / thaw cycles.
Database Links	HGNC:16400 OMIM:120100 Reactome:R-HSA-5689901
Alternative Names	NACHT LRR and PYD domains-containing protein 3 Angiotensin/vasopressin receptor AII/AVP-like Caterpillar protein 1.1 CLR1.1 Cold-induced autoinflammatory syndrome 1 protein Cryopyrin PYRIN-containing APAF1-like pr
Function	As the sensor component of the NLRP3 inflammasome, plays a crucial role in innate immunity and inflammation, In response to pathogens and other damage-associated signals, initiates the formation of the inflammasome polymeric complex, made of NLRP3, PYCARD and CASP1 (and possibly CASP4 and CASP5), Recruitment of proCASP1 to the inflammasome promotes its activation and CASP1-catalyzed IL1B and IL18 maturation and secretion in the extracellular milieu, Activation of NLRP3 inflammasome is also required for HMGB1 secretion ,
Cellular Localization	Cytoplasm, cytosol,
Post-translational Modifications	The disulfide bond in the pyrin domain might play a role in reactive oxygen species-mediated activation,