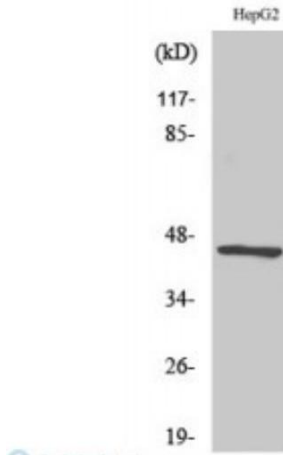


Acrosin antibody

Cat# NB-22-0001 (100 ul)

Cat# NB-22-0001-S (20 ul)



Western Blot (WB) analysis of specific cells using Acrosin Polyclonal Antibody.

Description

Rabbit Polyclonal to Acrosin.

Product Description

Code	NB-22-0001
Host	Rabbit
Reactivity	Human
Applications	ELISA, WB
Immunogen	Synthesized peptide derived from human
Immunogen Region	Acrosin 40-120 aa, N-terminal
Gene ID	49
Gene Symbol	ACR
Dilution range	WB 1:500-1:2000 ELISA 1:5000
Specificity	Acrosin Polyclonal Antibody detects endogenous levels of Acrosin protein.

Purification	The antibody was affinity-purified from rabbit antiserum by affinity-chromatography using epitope-specific immunogen.
Protein Name	light chainAcrosin heavy chain
Molecular Weight	45 kDa
Clonality	Polyclonal
Conjugation	Unconjugated
Isotype	IgG
Formulation	Liquid in PBS containing 50% glycerol, 0.5% BSA and 0.02% sodium azide.
Concentration	1 mg/ml
Storage Instruction	Store at -20°C, and avoid repeat freeze-thaw cycles.

Target

Database Links	HGNC: 126 OMIM: 102480
Alternative Names	ACR antibody ACRS antibody Acrosin antibody Acrosin light chain antibody Acrosin heavy chain antibody
Function	Acrosin is the major protease of mammalian spermatozoa. It is a serine protease of trypsin-like cleavage specificity, it is synthesized in a zymogen form, proacrosin and stored in the acrosome.

For reference only

For Research Use Only. Not for Diagnostic or Therapeutic Use.