

Certificate Of Analysis
Quality Control Testing and Research ApplicationCOA Preparation Date: 29/12/2014
COA Revision Date: 29/12/2017

Product: LP17
Cat. No.: BP0364
Batch No.: 0364BP/01
Chemical Name:

1. PHYSICAL AND CHEMICAL PROPERTIES

Batch Molecular Formula: C₈₉H₁₃₈N₂₄O₂₄S
Batch Molecular Weight: 1960.26
CAS No.:
Physical Appearance: White lyophilised solid
Melting Point:
Solubility: Soluble in water
Storage: Desiccate at -20° C
Batch Molecular Structure:

H-Leu-Gln-Val-Thr-Asp-Ser-Gly-Leu-Tyr-Arg-
Cys-Val-Ile-Tyr-His-Pro-Pro-NH₂

Product Description: **TREM-1 peptide. The triggering receptor expressed on myeloid cells (TREM)-1 is a recently discovered cell-surface molecule that has been identified both on human and murine polymorphonuclear neutrophils and mature monocytes. It belongs to the immunoglobulin superfamily and activates downstream signaling pathways with the help of an adaptor protein called DAP12. It has been shown that the expression of TREM-1 was greatly up-regulated on neutrophils and monocytes in the presence of such bacteria as Pseudomonas aeruginosa or Staphylococcus aureus, both in cell culture and in tissue samples from patients with infection.**

References: 1. Gibot et al. (2004) JEM 200:1419; 2. Gibot et al. (2006) J Infect Dis 194:975

- CAUTION - Not fully tested. For Research use only. Not for human use. –

Certificate Of Analysis
Quality Control Testing and Research Application

COA Preparation Date: 29/12/2014
 COA Revision Date: 29/12/2017

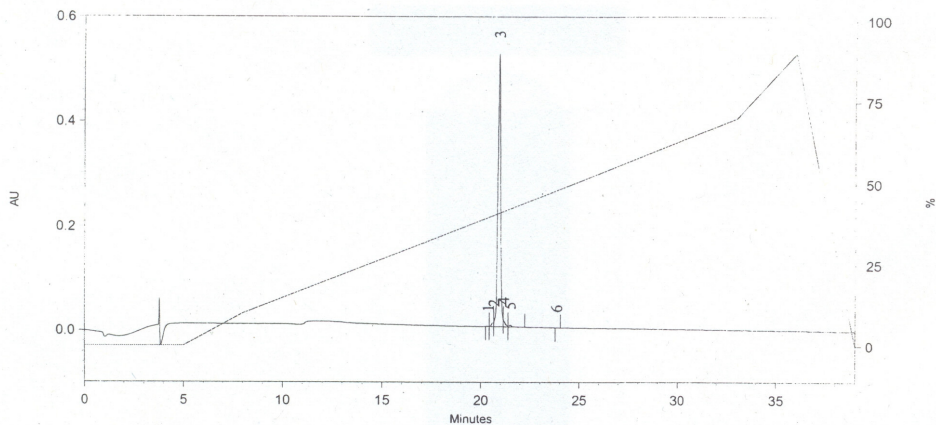
BP0364 LP17

2. ANALYTICAL DATA

HPLC: corresponds to the reference

MS: corresponds to the reference

Tests: HPLC Assay: 96.4% (complies).



Pk #	Retention Time	Height	Height Percent	Area	Area Percent
1	20.367	658	0.120	5194	0.103
2	20.650	7748	1.415	55001	1.092
3	20.917	522530	95.398	4857694	96.453
4	21.142	12968	2.368	84487	1.678
5	21.492	3772	0.689	33584	0.667
6	23.833	62	0.011	381	0.008
Totals		547738	100.000	5036341	100.000

- CAUTION - Not fully tested. For Research use only. Not for human use. -