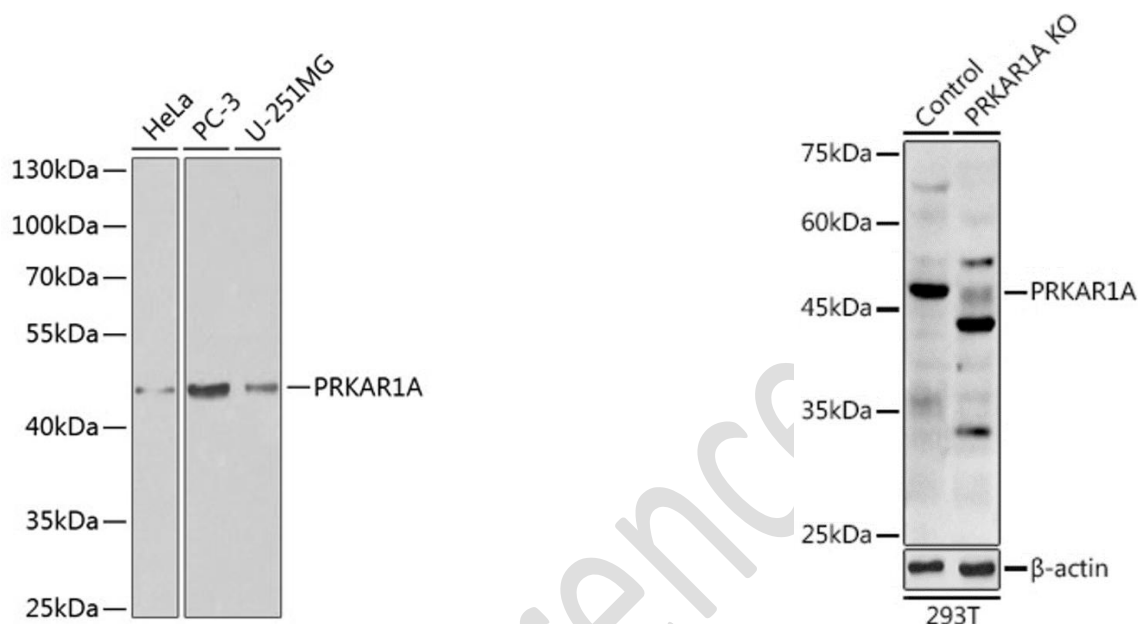


Anti-PRKAR1A antibody (1-250)

Cat # NB-22-20039-50 size: 50µl

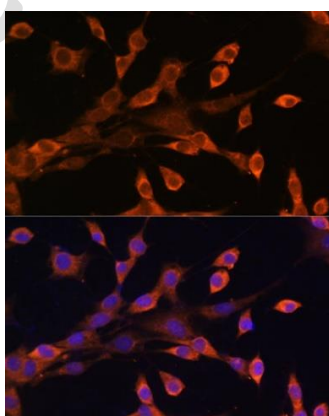
Cat # NB-22-20039 size: 100µl

Cat # NB-22-20039-200 size: 200µl



Western blot analysis of extracts of various cell lines, using PRKAR1A antibody at 1:1000 dilution. 2nd antibody: HRP Goat Anti-rabbit IgG (H+L) at 1:10000 dilution. Lysates/proteins: 25ug per lane. Blocking buffer: 3% nonfat dry milk in TBST.

Western blot analysis of extracts from normal (control) and PRKAR1A knockout (KO) 293T cells, using PRKAR1A antibody at 1:1000 dilution. 2nd antibody: HRP Goat Anti-rabbit IgG (H+L) at 1:10000 dilution. Lysates/proteins: 25ug per lane. Blocking buffer: 3% nonfat dry milk in TBST. Detection: ECL Enhanced Kit. Exposure time: 180s.



Immunofluorescence analysis of NIH/3T3 cells using PRKAR1A antibody (STJ25122) at dilution of 1:100. Blue: DAPI for nuclear staining.

Description

Rabbit polyclonal antibody anti-PRKAR1A (1-250) is suitable for use in Western Blot, Immunohistochemistry and Immunofluorescence.

Product Information

Host:	Rabbit
Applications:	WB, IHC, IF
Reactivity:	Human, Mouse
Clonality:	Polyclonal
Conjugation:	Unconjugated
Isotype:	IgG
Formulation:	PBS containing 0.02% Sodium Azide, 50% Glycerol, pH7.3.
Purification:	Affinity purification
Dilution Range:	WB 1:500-1:2000 IHC 1:50-1:200 IF 1:50-1:200
Storage Instruction:	Store in a freezer at -20°C and avoid freeze-thaw cycles.

Target

Gene Symbol:	PRKAR1A
Gene ID:	5573
Uniprot ID:	KAPO_HUMAN
Immunogen Region:	1-250
Immunogen:	Recombinant fusion protein containing a sequence corresponding to amino acids 1-250 of human PRKAR1A (NP_002725.1).

Additional information

Tissue Specificity:	Four types of regulatory chains are found: I-alpha, I-beta, II-alpha, and II-beta. Their expression varies among tissues and is in some cases constitutive and in others inducible.
Post Translational Modifications:	The pseudophosphorylation site binds to the substrate-binding region of the catalytic chain, resulting in the inhibition of its activity.
Function:	Regulatory subunit of the cAMP-dependent protein kinases involved in cAMP signaling in cells.
Protein Name:	Camp-Dependent Protein Kinase Type I-Alpha Regulatory Subunit Tissue-Specific Extinguisher 1, Tse1
Database Links:	Reactome: R-HSA-163615 Reactome: R-HSA-164378 Reactome: R-HSA-180024 Reactome: R-HSA-381676 Reactome: R-HSA-432040 Reactome: R-HSA-442720 Reactome: R-HSA-5610787
Cellular Localisation:	Cell Membrane
Alternative Antibody Names	Anti-Camp-Dependent Protein Kinase Type I-Alpha Regulatory Subunit antibody Anti-Tissue-Specific Extinguisher 1 antibody Anti-Tse1 antibody Anti-PKR1 antibody Anti-PRKAR1 antibody

***For reference only
For Research Use Only. Not for Diagnostic or Therapeutic Use.***