



Monoclonal Anti-Human Estrogen Receptor (B10)

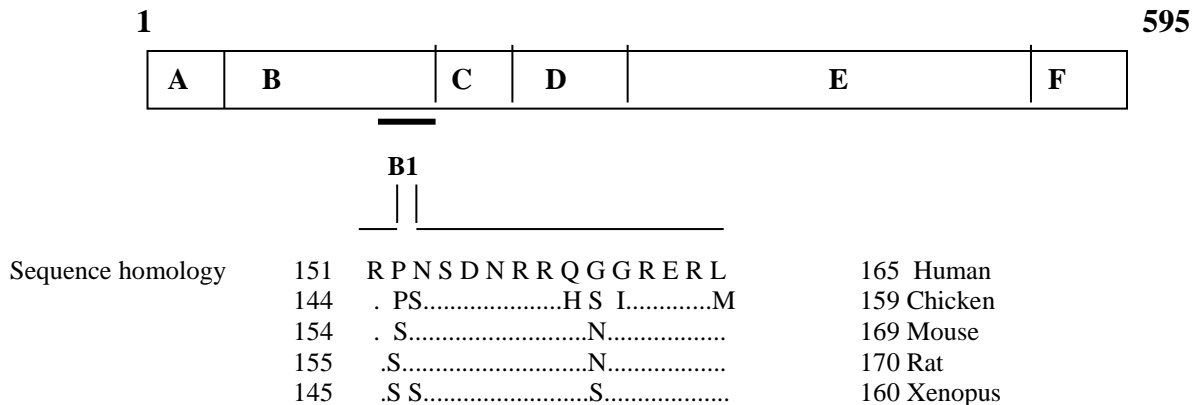
Ref. : NB-01-0028

Volume : 100µl

Format : Crude Ascites Fluid

Murine Isotype : IgG2a K

Specificity : the peptide used as immunogen correspond to the amino-acid sequence 151-165 from human ER (B region)



Species reactivities:

- Does not cross react with chicken.
- Other reactivities have not been evaluated (See sequence Homology)

Applications :

- Immunohistochemistry : frozen section and microwave oven treated paraffin sections (Suggested dilution 1/1000-1/2000)
- Immunocytochemistry (Suggested dilution 1/1000-1/2000)
- Elisa (Suggested dilution 1/1000-1/2000)
- Western Blot dilution (Suggested dilution 1/1000-1/2000)
- Immunoprecipitation (Suggested dilution 1/10)
- Gels super shift assay (Suggested dilution 1/10)
- ChIP

Storage : Store at -20°C (up to 3years). Avoid repeated freezing and thawing cycles

Does not contain any preservative

For research use only