



Mouse Anti-hCD25 Monoclonal Antibody (Clone 7G7B6)

NB-30-00055





Mouse Anti-hCD25 Monoclonal Antibody (Clone 7G7B6)
Cat# NB-30-00055

Clonality:	Monoclonal
Clone Name:	7G7B6
Application:	FACS
Reactivity:	Human
Gene:	IL2RA
Gene ID:	3559
Uniprot ID:	P01589
Format:	Purified
Alternative Name:	IL2RA,CD25
Isotype:	Mouse IgG2a Kappa

Immunogen Information: Recombinant human CD25 protein was used as an immunogen for this antibody.

DESCRIPTION

CD25 is the alpha chain of the IL-2 receptor. It is a type I transmembrane protein present on activated T cells, activated B cells, some thymocytes, myeloid precursors, and oligodendrocytes that associates with CD122 to form a heterodimer that can act as a high-affinity receptor for IL-2. Though CD25 has been shown to influence effector function of lymphocytes, it is thought to play a greater role in immune tolerance in mice. Constitutive expression of CD25 on Treg cells is thought to be crucial to their survival and maintenance of immune homeostasis. Expression of CD25 and its role in immunology may be species dependent, since CD25 appears to play a larger role in T-cell effector responses in humans compared to mice, and may be somewhat dispensable for the maintenance of Treg cells as seen in patients treated with CD25-blocking antibodies.

Product Info

Amount:	25 µg / 100 µg
Purification:	Protein G Chromatography
Content	25 µg in 50 µl/100 µg in 200 µl PBS containing 0.05% BSA and 0.05% sodium azide. Sodium azide is highly toxic.

Storage condition: Store the antibody at 4°C; stable for 6 months. For long-term storage; store at -20°C. Avoid repeated freeze and thaw cycles.

Application Note

FACS Analysis: 0.5-1 $\mu\text{g}/10^6$ cells

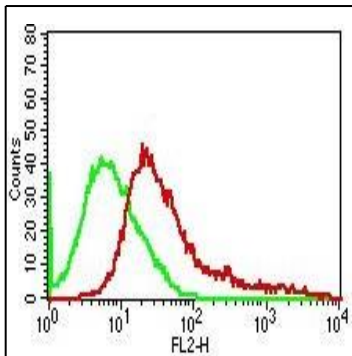


Fig:1- Cell surface flow analysis of hCD25 in human PBMC using 0.5 $\mu\text{g}/10^6$ cells. Green represents isotype control (NeoBiotech); red represents anti-hCD25 antibody (10-4125). Goat anti-mouse PE conjugated secondary antibody (NeoBiotech) was used.

**For Research Use Only.
Not for use in diagnostic/therapeutics procedures.**