
Anti-CD14 antibody (20-330)
Cat# NB-22-22698 Size:100uL

GENERAL INFORMATION

Product Type	Primary antibodies
Short Description	Rabbit polyclonal antibody anti-CD14 (20-330) is suitable for use in Western Blot, Immunohistochemistry and Immunofluorescence
Applications	WB, IHC, IF
Host/Source	Rabbit
Reactivity	Human, Mouse, Rat

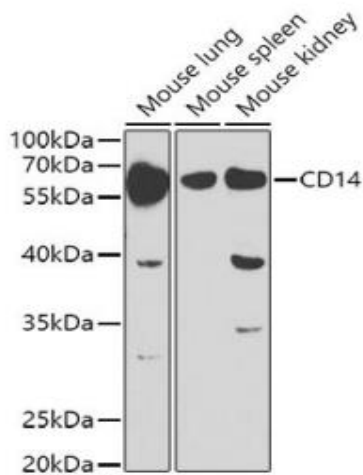
PRODUCT PROPERTIES

Clonality	Polyclonal
Clone ID	
Concentration	
Conjugation	Unconjugated
Purification	Affinity purification
Dilution Range	WB 1:500-1:2000 IHC 1:50-1:200 IF 1:50-1:200
Formulation	PBS containing 0.02% Sodium Azide, 50% Glycerol, pH7.3.
Isotype	IgG
Storage Instruction	Store in a freezer at -20°C and avoid freeze-thaw cycles.

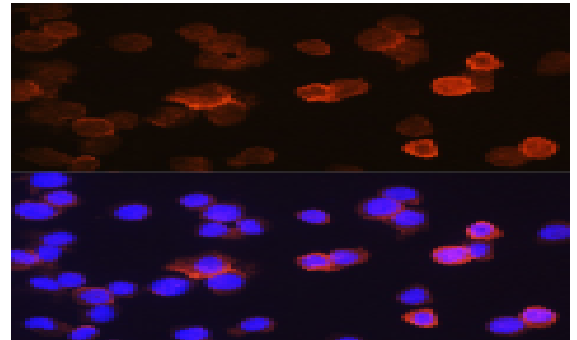
TARGET INFORMATION

Gene ID	929
Gene Symbol	CD14
Uniprot ID	CD14_HUMAN
Immunogen	Recombinant fusion protein containing a sequence corresponding to amino acids 20-330 of human CD14 (NP_001167576.1).
Immunogen Region	20-330
Specificity	
Immunogen Sequence	

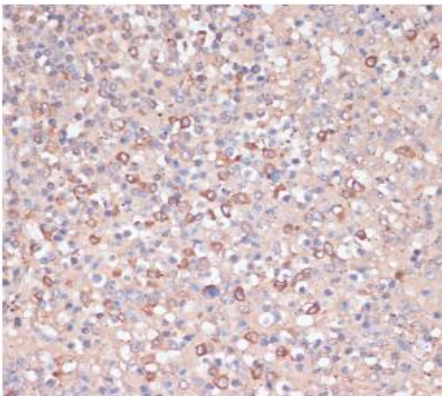
This product is suitable for in-vitro studies under the RESEARCH USE ONLY [RUO] licence. This product must not be used as for diagnostic or other medical purposes.



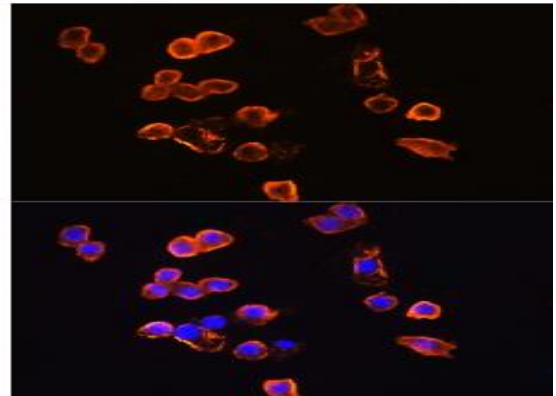
Western blot analysis of extracts of various cell lines, using CD14 antibody (NB-22-22698) at 1:1000 dilution. Secondary antibody: HRP Goat Anti-rabbit IgG(H+L) at 1:10000 dilution. Lysates/proteins: 25ug per lane. Blocking buffer: 3% nonfat dry milk in TBST.



Immunofluorescence analysis of THP-1 cells using CD14 antibody (NB-22-22698) at dilution of 1:100. Blue : DAPI for nuclear staining.



Immunohistochemistry of paraffin-embedded human spleen using CD14 antibody (NB-22-22698) at dilution of 1:100 (40x lens).



Immunofluorescence analysis of RAW264.7 cells using CD14 antibody (NB-22-22698) at dilution of 1:100 Blue: DAPI for nuclear staining