

Western

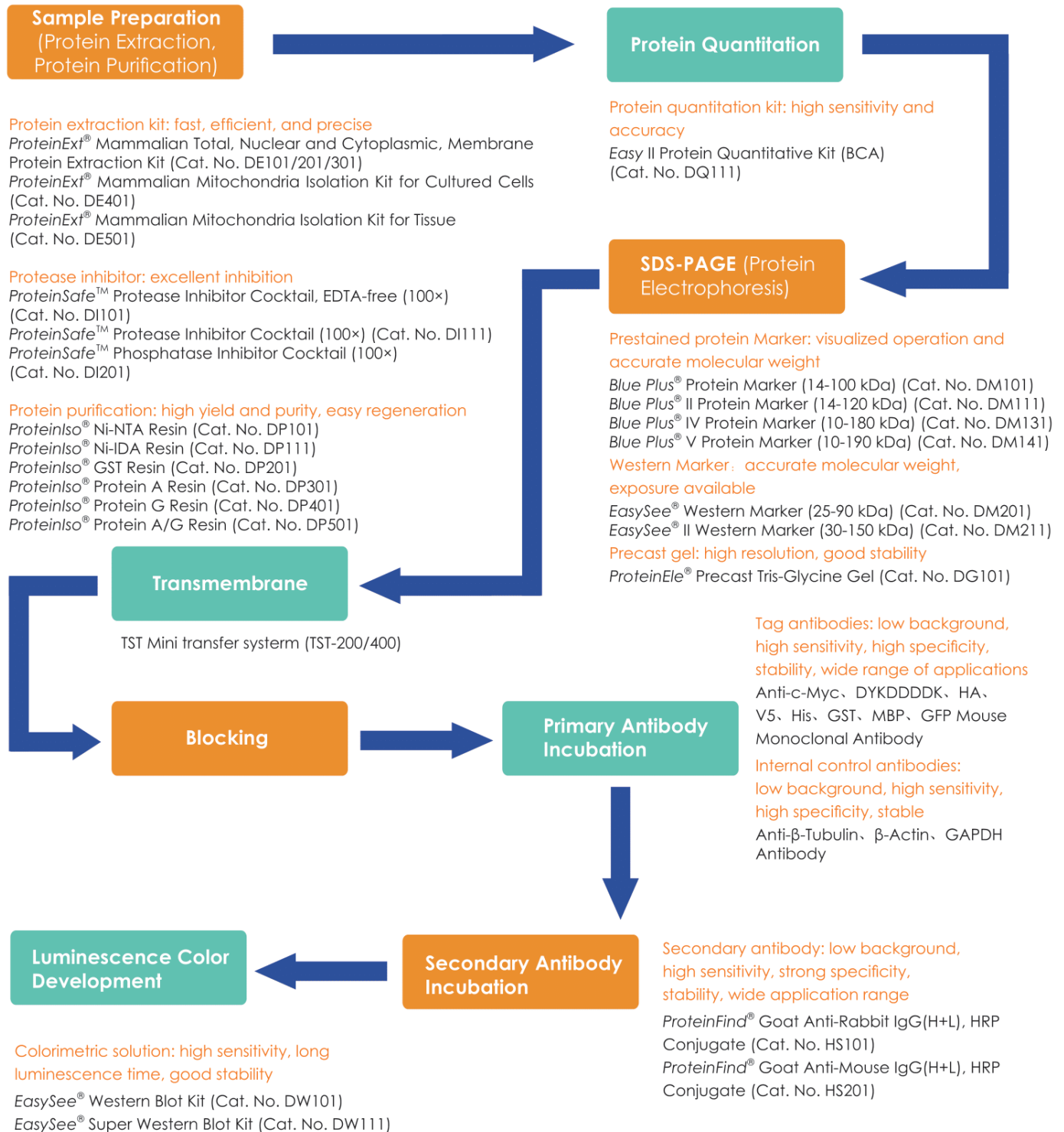
blotting

Western Blot

Protocols

Western Blot

Overall Process and Related Products



01

ProteinExt[®] Series Mammalian Protein Extraction Products

ProteinExt[®] Mammalian Total Protein Extraction Kit

ProteinExt[®] Mammalian Nuclear and Cytoplasmic Protein Extraction Kit

ProteinExt[®] Mammalian Membrane Protein Extraction Kit

ProteinExt[®] Mammalian Mitochondria Isolation Kit for Cultured Cells/Tissue

03

ProteinSafe[™] Protease Inhibitor

ProteinSafe[™] Protease Inhibitor Cocktail, EDTA-free (100×)

ProteinSafe[™] Protease Inhibitor Cocktail (100×)

05

ProteinIso[®] Series Protein Purification Products

ProteinIso[®] Ni-NTA Resin

ProteinIso[®] GST Resin

07

Protein Detection Products

Blue Plus[®] Series Pre-stained Protein Marker

EasySee[®] Series Western Marker

ECL Colorimetric Solution: EasySee[®] Super Western Blot Kit

09

ProteinFind[®] Series Common Antibodies

ProteinFind[®] Anti-c-Myc Mouse Monoclonal Antibody

ProteinFind[®] Anti-β-Tubulin Mouse Monoclonal Antibody

ProteinFind[®] Goat Anti-Rabbit IgG (H+L), HRP Conjugate

11

Integrated Protein Analysis System

ProteinEle[®] Precast Tris-Glycine Gel

TSE-P Mini Vertical Electrophoresis System

TST Mini Transfer System

CONTENTS

Distributed by
clinisciences

TRANSGEN

ProteinExt[®] Mammalian
Protein Extraction
Products



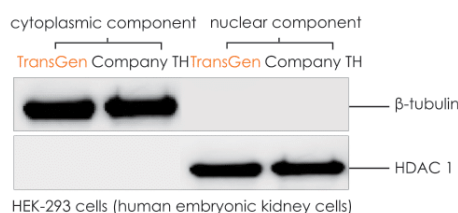
ProteinExt[®] Mammalian Total Protein Extraction Kit (Cat. No. DE101)

To extract total protein from mammalian cell and tissue samples, with excellent extraction effect on cytoplasmic protein, membrane protein, and nuclear protein. Easy to operate, no equipment such as ultracentrifuges are required.

01

02

ProteinExt[®] Mammalian Nuclear and Cytoplasmic Protein Extraction Kit (Cat. No. DE201)



To extract and isolate nuclear protein and cytoplasmic protein from mammalian cell and tissue samples. The cross-contamination rate is usually less than 10%, and the entire process can be completed in about 80 minutes without the need for ultracentrifuges and other equipment.

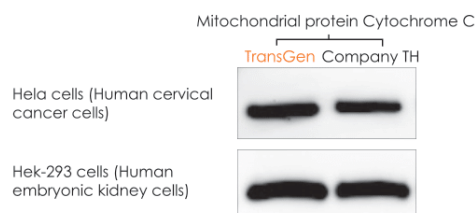
ProteinExt[®] Mammalian Membrane Protein Extraction Kit (Cat. No. DE301)

To extract membrane protein from mammalian cell and tissue samples, the extraction rate of 1-2 times transmembrane protein is more than 90%, high purity of extracted membrane protein, and the cross-contamination rate of cytoplasmic protein is usually less than 10%. Easy to operate, fast, no need for ultracentrifuges and other equipment, and the entire process can be completed in about 70 minutes.

03

ProteinExt[®] Mammalian Mitochondria Isolation Kit for Cultured Cells/Tissue (Cat. No. DE401/ DE501)

Two methods (reagent method and homogenization method) are provided for the isolation of mitochondria from mammalian cell/tissue samples. It has the advantages of good separation effect, simple and rapid operation. Compared to the homogenization method, the reagent method is gentler and minimizes damage to mitochondria, and can process multiple samples simultaneously.



04

Distributed by
clinisciences

TRANSGEN

ProteinSafe[™] Protease
Inhibitor

B

01

ProteinSafe™ Protease Inhibitor Cocktail, EDTA-free (100×) (Cat. No. DI101)

It is a mixture of 6 independent protease inhibitors (AEBSF, Aprotinin, Bestatin, E-64, Leupeptin, Pepstatin A). The optimized ratio enables it to inhibit the activity of almost all proteases, including serine protease, cysteine protease, aspartate protease, alanyl-aminopeptidase, pepsin, etc., and prevent protein degradation in all aspects.



WB detects the protective effect of protease inhibitors against the degradation of β -Tubulin in HEK-293T cell total protein extracts

02

ProteinSafe™ Protease Inhibitor Cocktail (100×) (Cat. No. DI111)

It is composed of ProteinSafe™ Protease Inhibitor Cocktail, EDTA-free (100×) (AEBSF, Aprotinin, Bestatin, E-64, Leupeptin, Pepstatin A) and EDTA. The optimized ratio enables it to inhibit the activity of almost all proteases, including serine protease, cysteine protease, aspartate protease, alanylaminopeptidase, pepsin, metalloprotease, etc., and prevent protein degradation in all aspects.

TRANSGEN

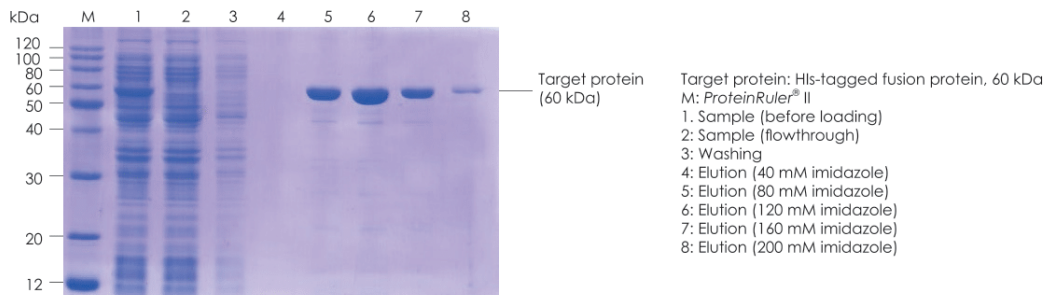
ProteinIso[®] Protein
Purification Products



01

ProteinIso[®] Ni-NTA Resin (Cat. No. DP101)

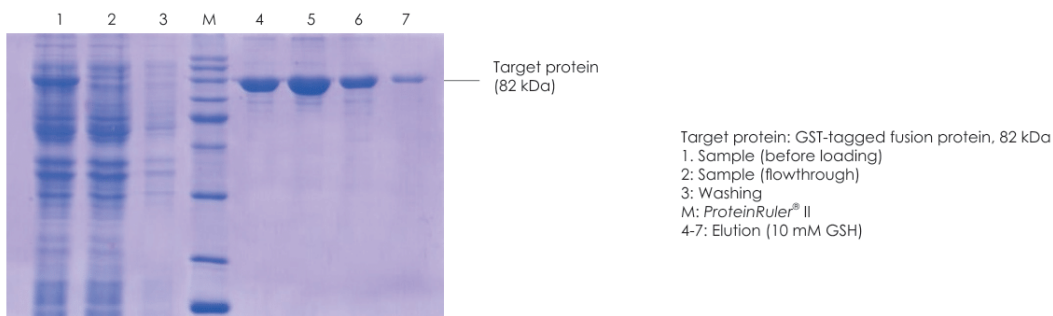
- High yield and purity, easy to regenerate.
- The leakage of nickel ions in the purification process is reduced by the firm binding of four sites with nickel ions.
- It is suitable for the purification of His-tagged recombinant proteins expressed by any expression system under non-denaturing or denaturing conditions.



02

ProteinIso[®] GST Resin (Cat. No. DP201)

- High yield and purity, easy to regenerate.
- An affinity chromatography medium with glutathione as the ligand and agarose as the matrix.
- It is suitable for purification of GST-tagged recombinant proteins expressed by any expression system.



Distributed by
CliniSciences

TRANSGEN

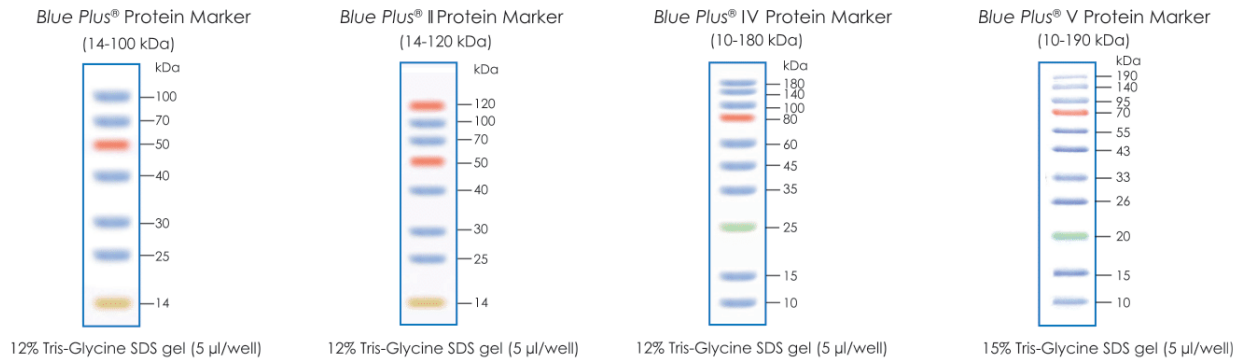
Protein Detection Products



01

Blue Plus® Series Pre-stained Protein Marker (Cat. No. DM101/ DM111/ DM131/ DM141)

- Dynamic monitoring of electrophoresis status.
- It is convenient to evaluate the effect and direction of transmembrane.
- Ready-to-use, direct loading on gels without heating.



02

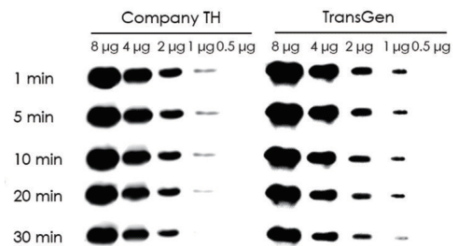
ECL Luminescent Solution EasySee® Super Western Blot Kit (Cat. No. DW111)

The kit uses enhanced lumino-based chemiluminescence for the detection of horseradish peroxidase (HRP) conjugated antibodies and the corresponding antigens.

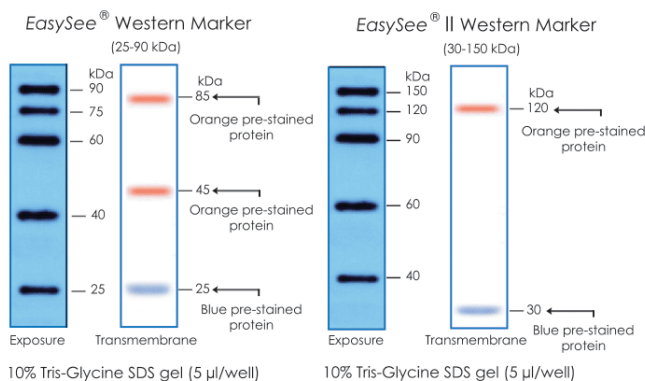
- High sensitivity, enabling the detection of picogram amounts of samples.
- Easy to use, high stability.

EasySee® Series Western Marker (Cat. No. DM201/ DM211)

- Dynamic monitoring of electrophoresis status.
- It is convenient to judge the effect and direction of transmembrane.
- No other molecules are conjugated, and the molecular weight size is accurately displayed after chemiluminescence detection.
- Ready-to-use, direct loading on gels without heating.



WB detection of luminescence solution



03

Distributed by
clinisciences

TRANSGEN

ProteinFind[®] Common
Antibodies



01

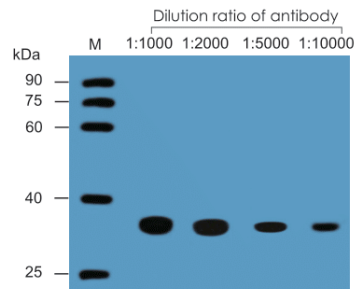
Tag Antibody

ProteinFind® Anti-c-Myc Mouse Monoclonal Antibody (Cat. No. HT101)

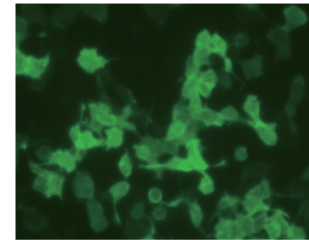
This antibody highly specifically recognizes the c-Myc tag localized at the C terminal or N terminal of recombinant proteins, and is suitable for qualitative detection of c-Myc fusion expression proteins.

Recommended Dilution:

- Western Blot: 1:500 -10000
- ELISA: 1:500-5000
- IF:1:100-500
- IP:1:100-500



WB: Anti-c-Myc-tagged murine monoclonal antibody detects fusion expression of c-Myc-tagged protein (30 kDa)



IF: Anti-c-Myc-tagged murine monoclonal antibody detects transient expression of c-Myc-tagged fusion protein in HEK-293 cells

02

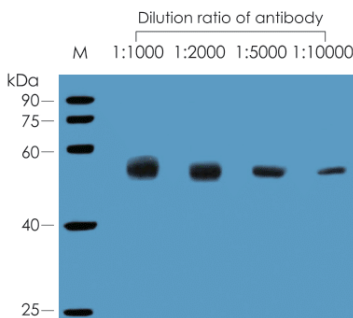
Internal Control Antibody

ProteinFind® Anti-β-Tubulin Mouse Monoclonal Antibody (Cat. No. HC101)

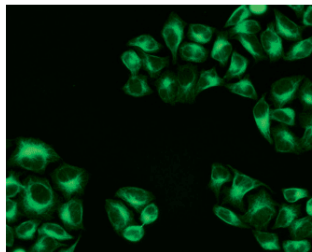
Highly specific recognition of β-Tubulin protein from human, rat, mouse, sheep and other species

Recommended Dilution:

- Western Blot: 1:500 -10000
- ELISA: 1:500-5000
- IF:1:100-500
- IP:1:100-500



WB: Anti-β-Tubulin murine monoclonal antibody detection β-Tubulin protein (50 kDa)



IF: Anti-β-Tubulin murine monoclonal antibody detects the expression of β-Tubulin protein in HeLa cells.

Secondary Antibody

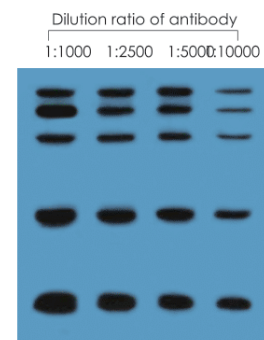
ProteinFind® Goat Anti-Rabbit IgG (H+L), HRP Conjugate (Cat. No. HS101)

It can specifically recognize heavy and light chains of rabbit IgG, but has no obvious cross-reaction with IgG of other species. It has the characteristics of low background and high sensitivity, and is suitable for Western Blot and ELISA.

Recommended Dilution:

- Western Blot: 1:500 -10000
- ELISA: 1:1000-5000

03



WB: HRP labeled sheep anti-rabbit IgG (H+L) secondary antibody detection EasySee® Western Marker(The loading volume is 5 μl)

Distributed by
Clinisciences

TRANSGEN

Integrated Protein Analysis System



ProteinEle® Precast Tris-Glycine Gel

01

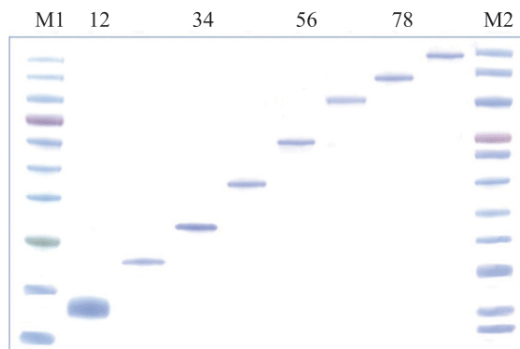
ProteinEle® offers a variety of precast Tris-Glycine gels, including fixed concentrations of 8%, 10%, and 12%, as well as a 4–20% gradient gel. You can choose from multiple well formats, including 10-well and 15-well options, with 10 pieces per box.

Features

- High resolution: Prepared with a pH-neutral buffer, running in the classic Tris-Glycine electrophoresis buffer, featuring high resolution and good stability.
- Versatility: A variety of precast Tris-Glycine gels with different concentrations, suitable for the electrophoresis of both native and denatured proteins.
- High compatibility: Compatible with a variety of small - sized electrophoresis tanks.
- Simple operation: Offering convenience in use and simplicity in installation.

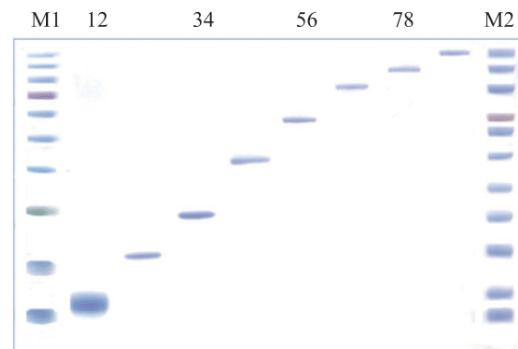
Data exhibition

Gel image of DG101



ProteinEle® Precast Tris-Glycine Gel 10 wells (5 µl/well)

Gel image of DG102



ProteinEle® Precast Tris-Glycine Gel 10 wells (5 µl/well)

A list of the compatible instruments for these gels

Bio-Rad Mini-PROTEAN (II/3 /Tetra System)
Hoefer Mighty Small (SE 250/ SE 260/ SE 280)

TransGen (TSE-P200/P400)

Other electrophoresis tanks with gel plates width of 10 cm.

Additionally, please note that the following instruments require custom baffle plates to be used:

Baffle plate 1 (TSE-SBP1) is compatible with Thermo Life Technology Novex Mini-Cell.

Baffle plate 2 (TSE-SBP2) is compatible with Thermo Life Mini Gel Tank.

Distributed by
CliniSciences

Specifications

(1) Gradient Gels (DG101)

Product Code	Product Name	Concentration	Wells
DG101-01-V2	ProteinEle® Precast Tris-Glycine Gel	4%-20%	10
DG101-02-V2	ProteinEle® Precast Tris-Glycine Gel	4%-20%	15

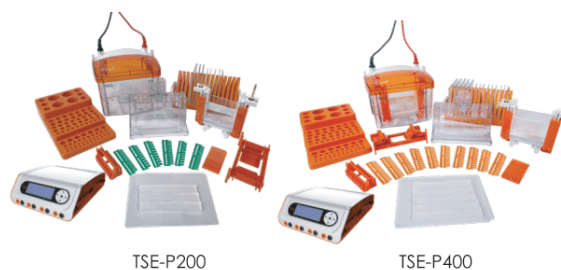
(2) Fixed Percentage Gels (DG102)

Product Code	Product Name	Concentration	Wells
DG102-01	ProteinEle® Precast Tris-Glycine Gel	12%	10
DG102-02	ProteinEle® Precast Tris-Glycine Gel	12%	15

02

TSE-P Mini Vertical Electrophoresis System

- 2/4 minigel electrophoresis can be completed in less than an hour.
- Sealing spacer is glued to the long glass plate to ensure that the glass plates are accurately aligned, preventing the gel leakage.
- The camming frame ensures precise alignment of the horizontal planes.
- Comb with teeth and built-in ridges isolates the gel from the air and avoid inhibiting polymerization reaction of the gel.
- Glass plates and combs are marked with thickness and number of wells for easy identification.
- The glass plate with sealing spacer makes it thicker and stronger.



Product Parameters

Instrument	TSE-P200	TSE-P400
Gel capacity	1-2 Piece	1-4 Piece
Gel thickness	1.0 mm (standard), 0.75 mm, 1.5 mm	
Glass plate dimension	Divided-light glass: 100 x 83 mm Short glass panel: 100 x 73 mm	
Gel dimension	83 x 73 mm	
Comb specification	10/15 teeth, 1.0 mm (standard) 10/15 teeth, 0.75 mm (optional) 10/15 teeth, 1.5 mm (optional)	
Platinum electrode	φ0.25 mm	
External dimension (L×W×H)	180 x 120 x 160 mm	
Chemical reagent compatibility	Do not touch acetone and ethanol, and combs must not be repeatedly exposed to 100% TEMED	
Power supply	TRANSGEN Universal Electrophoresis System Power Supply (TSE-E) is a suitable alternative (optional)	

03

TST Mini Transfer System

- It can efficiently transfer protein samples to media such as nitrocellulose membranes and PVDF membranes, and two/four transfer chips can be placed at the same time.
- Supports high-current fast transfers or low-current overnight transfers.
- Included 2 cooling units, which can quickly rotate to absorb the heat of buffer.
- Red and black color-coded transfer clips and electrodes to ensure proper orientation of the sample during transfer.



Product Parameters

Instrument	TST-200	TST-400
Gel capacity	1-2 Piece	1-4 Piece
Electrophoretic core	Polycarbonate	
Sandwich cassette	Polycarbonate	
Electrode	Platinum wire	
Tank and lip	Polycarbonate	
Cooling unit	Polyethylene + high-efficiency cool storage agent	
Electrophoresis tank dimension (L×W×H)	160 x 120 x 180 mm	
Gel clip dimension	100 × 110 mm	109 × 116 mm
Maximum gel dimension	75 × 110 mm	80 × 96 mm
Buffer capacity	Without cooling unit: 850 mL With cooling unit: 650 mL	
Chemical reagent compatibility	Do not touch chlorinated hydrocarbons (such as chloroform), aromatic hydrocarbons (such as toluene, benzene) and acetone	
Power supply	TRANSGEN Universal Electrophoresis System Power Supply (TSE-E) is a suitable alternative (optional)	

ProteinExt[®] Mammalian Protein Extraction Products

Product Name	Catalog Number	Specification
ProteinExt [®] Mammalian Total Protein Extraction Kit	DE101-01	100 ml
ProteinExt [®] Mammalian Nuclear and Cytoplasmic Protein Extraction Kit	DE201-01	50 rxns
ProteinExt [®] Mammalian Membrane Protein Extraction Kit	DE301-01	50 rxns
ProteinExt [®] Mammalian Mitochondria Isolation Kit for Cultured Cells	DE401-01	50 rxns
ProteinExt [®] Mammalian Mitochondria Isolation Kit for Tissue	DE501-01	50 rxns

ProteinSafe[™] Protease Inhibitor

Product Name	Catalog Number	Specification
ProteinSafe [™] Protease Inhibitor Cocktail, EDTA-free (100×)	DI101-01	500 µl
	DI101-02	1 ml
ProteinSafe [™] Protease Inhibitor Cocktail (100×)	DI111-01	500 µl
	DI111-02	1 ml
ProteinSafe [™] Phosphatase Inhibitor Cocktail (100×)	DI201-01	500 µl
	DI201-02	1 ml

ProteinIso[®] Protein Purification Products

Product Name	Catalog Number	Specification
ProteinIso [®] Ni-NTA Resin	DP101-01	5 ml
	DP101-02	25 ml
ProteinIso [®] Ni-IDA Resin	DP111-01	5 ml
	DP111-02	25 ml
ProteinIso [®] GST Resin	DP201-01	10 ml
ProteinIso [®] Protein A Resin	DP301-01	5 ml
ProteinIso [®] Protein G Resin	DP401-01	5 ml
ProteinIso [®] Protein A/G Resin	DP501-01	1 ml

Protein Detection Products

Product Name	Catalog Number	Specification
Blue Plus [®] Protein Marker (14-100 kDa)	DM101-01	250 µl
	DM101-02	2×250 µl
Blue Plus [®] II Protein Marker (14-120 kDa)	DM111-01	250 µl
	DM111-02	2×250 µl
Blue Plus [®] IV Protein Marker (10-180 kDa)	DM131-01	250 µl
	DM131-02	2×250 µl
	DM131-03	10×250 µl
Blue Plus [®] V Protein Marker (10-190 kDa)	DM141-01	250 µl
	DM141-02	2×250 µl
	DM141-03	10×250 µl
Blue Plus [®] VI Protein Marker (10-250 kDa)	DM151-01	250 µl
	DM151-02	2×250 µl
	DM151-03	10×250 µl
ProteinRuler [®] I (12-80 kDa)	DR101-01	250 µl
	DR101-02	2×250 µl

Distributed by


Product Name	Catalog Number	Specification
<i>ProteinRuler</i> [®] II (12-120 kDa)	DR201-01	250 µl
	DR201-02	2×250 µl
<i>ProteinRuler</i> [®] IV (30-200 kDa)	DR401-01	250 µl
	DR401-02	2×250 µl
<i>EasySee</i> [®] Western Blot Kit	DW101-01	100 ml
	DW101-02	200 ml
<i>EasySee</i> [®] Super Western Blot Kit	DW111-01	100 ml
	DW111-02	200 ml
<i>EasySee</i> [®] Western Marker (25-90 kDa)	DM201-01	250 µl
	DM201-02	2×250 µl
<i>EasySee</i> [®] II Western Marker (30-150 kDa)	DM211-01	250 µl
	DM211-02	2×250 µl
<i>Easy</i> II Protein Quantitative Kit (BCA)	DQ111-01	100 ml
<i>ProteinEle</i> [®] Precast Tris-Glycine Gel (4-20%)	DG101-01	4-20%, 1.0 mm, 10 wells, 10 Pieces/Box
	DG101-02	4-20%, 1.0 mm, 15 wells, 10 Pieces/Box
<i>ProteinEle</i> [®] Precast Tris-Glycine Gel (12%)	DG102-01	12%, 1.0 mm, 10 wells, 10 Pieces/Box
	DG102-02	12%, 1.0 mm, 15 wells, 10 Pieces/Box

***ProteinFind*[®] Common Antibodies**

Product Name	Catalog Number	Specification
<i>ProteinFind</i> [®] Anti-c-Myc Mouse Monoclonal Antibody	HT101-01	50 µl
	HT101-02	100 µl
<i>ProteinFind</i> [®] Anti-DYKDDDDK Mouse Monoclonal Antibody	HT201-01	50 µl
	HT201-02	100 µl
<i>ProteinFind</i> [®] Anti-HA Mouse Monoclonal Antibody	HT301-01	50 µl
	HT301-02	100 µl
<i>ProteinFind</i> [®] Anti-V5 Mouse Monoclonal Antibody	HT401-01	50 µl
	HT401-02	100 µl
<i>ProteinFind</i> [®] Anti-His Mouse Monoclonal Antibody	HT501-01	50 µl
	HT501-02	100 µl
<i>ProteinFind</i> [®] Anti-GST Mouse Monoclonal Antibody	HT601-01	50 µl
	HT601-02	100 µl
<i>ProteinFind</i> [®] Anti-MBP Mouse Monoclonal Antibody	HT701-01	50 µl
	HT701-02	100 µl
<i>ProteinFind</i> [®] Anti-GFP Mouse Monoclonal Antibody	HT801-01	50 µl
	HT801-02	100 µl
<i>ProteinFind</i> [®] Anti-β-Tubulin Mouse Monoclonal Antibody	HC101-01	50 µl
	HC101-02	100 µl
<i>ProteinFind</i> [®] Anti-β-Actin Mouse Monoclonal Antibody	HC201-01	50 µl
	HC201-02	100 µl
<i>ProteinFind</i> [®] Anti-GAPDH Mouse Monoclonal Antibody	HC301-01	50 µl
	HC301-02	100 µl
<i>ProteinFind</i> [®] Goat Anti-Rabbit IgG(H+L), HRP Conjugate	HS101-01	100 µl
<i>ProteinFind</i> [®] Goat Anti-Mouse IgG(H+L), HRP Conjugate	HS201-01	100 µl

Distributed by
CliniSciences

clinisciences

Austria

Company: CliniSciences GmbH
Address: Sternwartestrasse 76, A-1180
Wien - Austria
Telephone: +43 720 115 580
Fax: +43 720 115 577
Email: osterreich@clinisciences.com
Web: <https://www.clinisciences.com>



Belgium

Company: CliniSciences S.R.L
Address: Avenue Stalingrad 52, 1000
Brussels - Belgium
Telephone: +32 2 31 50 800
Fax: +32 2 31 50 801
Email: belgium@clinisciences.com
Web: <https://www.clinisciences.com>



Denmark

Company: CliniSciences ApS
Address: Oesterbrogade 226, st. 1,
Copenhagen, 2100 - Denmark
Telephone: +45 89 888 349
Fax: +45 89 884 064
Email: denmark@clinisciences.com
Web: <https://www.clinisciences.com>



Finland

Company: CliniSciences ApS
Address: Oesterbrogade 226, st. 1,
Copenhagen, 2100 - Denmark
Telephone: +45 89 888 349
Fax: +45 89 884 064
Email: suomi@clinisciences.com
Web: <https://www.clinisciences.com>



France

Company: CliniSciences S.A.S
Address: 74 Rue des Suisses, 92000
Nanterre- France
Telephone: +33 9 77 40 09 09
Fax: +33 9 77 40 10 11
Email: info@clinisciences.com
Web: <https://www.clinisciences.com>



Germany

Company: Clinisciences GmbH
Address: Wilhelm-Mauser-Str. 41-43,
50827 Köln - Germany
Telephone: +49 221 9498 320
Fax: +49 221 9498 325
Email: deutschland@clinisciences.com
Web: <https://www.clinisciences.com>



Iceland

Company: CliniSciences ApS
Address: Oesterbrogade 226, st. 1,
Copenhagen, 2100 - Denmark
Telephone: +45 89 888 349
Fax: +45 89 884 064
Email: island@clinisciences.com
Web: <https://www.clinisciences.com>



Ireland

Company: CliniSciences Limited
Address: Ground Floor, 71 lower Baggot street
Dublin D02 P593 - Ireland
Telephone: +353 1 6971 146
Fax: +353 1 6971 147
Email: ireland@clinisciences.com
Web: <https://www.clinisciences.com>



Italy

Company: CliniSciences S.r.l
Address: Via Maremmana inferiore 378
Roma 00012 Guidonia Montecelio - Italy
Telephone: +39 06 94 80 56 71
Fax: +39 06 94 80 00 21
Email: italia@clinisciences.com
Web: <https://www.clinisciences.com>



Netherlands

Company: CliniSciences B.V.
Address: Kraaijenhoffstraat 137A,
1018RG Amsterdam, - Netherlands
Telephone: +31 85 2082 351
Fax: +31 85 2082 353
Email: nederland@clinisciences.com
Web: <https://www.clinisciences.com>



Norway

Company: CliniSciences AS
Address: c/o MerVerdi Munkerudtunet 10
1164 Oslo - Norway
Telephone: +47 21 988 882
Email: norge@clinisciences.com
Web: <https://www.clinisciences.com>



Poland

Company: CliniSciences sp.Z.o.o.
Address: ul. Rotmistrza Witolda Pileckiego 67
lok. 200 - 02-781 Warszawa -Poland
Telephone: +48 22 307 0535
Fax: +48 22 307 0532
Email: polska@clinisciences.com
Web: <https://www.clinisciences.com>



Portugal

Company: Quimigen Unipessoal LDA
Address: Rua Almada Negreiros, Lote 5, Loja 14,
2615-275 Alverca Do Ribatejo - Portugal
Telephone: +351 30 8808 050
Fax: +351 30 8808 052
Email: info@quimigen.com
Web: <https://www.quimigen.pt>



Spain

Company: CliniSciences Lab Solutions
Address: C/ Hermanos del Moral 13
(Bajo E), 28019, Madrid - Spain
Telephone: +34 916 750 700
Fax: +34 91 269 40 74
Email: espana@clinisciences.com
Web: <https://www.clinisciences.com>



Sweden

Company: CliniSciences ApS
Address: Oesterbrogade 226, st. 1,
Copenhagen, 2100 - Denmark
Telephone: +45 89 888 349
Fax: +45 89 884 064
Email: sverige@clinisciences.com
Web: <https://www.clinisciences.com>



Switzerland

Company: CliniSciences AG
Address: Fracht Ost Flughafen Kloten
CH-8058 Zürich - Switzerland
Telephone: +41 (044) 805 76 81
Fax: +41 (044) 805 76 75
Email: switzerland@clinisciences.com
Web: <https://www.clinisciences.com>



UK

Company: CliniSciences Limited
Address: 11 Progress Business center, Whittle
Parkway, SL1 6DQ Slough- United Kingdom
Telephone: +44 (0)1753 866 511
or +44 (0) 330 684 0982
Fax: +44 (0)1753 208 899
Email: uk@clinisciences.com
Web: <https://www.clinisciences.com>



USA

Company: CliniSciences LLC
Address: c/o Carr Riggs Ingram,
500 Grand Boulevard, Suite 210 Miramar
Beach, FL 32550- USA
Telephone: +1 850 650 7790
Fax: +1 850 650 4383
Email: usa@clinisciences.com
Web: <https://www.clinisciences.com>

